

Contact Us



Olaya, Riyadh 12211
Saudi Arabia



+966 55 986 6034
+966 11 211 1042



dani.daher@ibc-sa.com
www.ibc-sa.com

COMPANY PROFILE



شركة البنيان المبتكر للمقاولات العامة
Innovative Building Contractors

Table of Content

About Us	04
Vision	05
Mission	06
Our Services	07
Health and Safety Measures	08
Our Factory	09
Key Projects	13
Our Clients	21
Certificates	22

About Us

Innovative **Building Contractors** is a well-established foreign investment company, operating under the umbrella of **4M Holding - Beirut Lebanon**, based in the Kingdom of Saudi Arabia, with our headquarters located in Riyadh. We specialize in fitouts and in architectural metals and have built a reputation as a trusted contractor in the local market. Our team of highly skilled workers and professional management have enabled us to achieve our position in the core of the contracting business in the Kingdom over a short span of time.



Vision



The core of our company is to act with integrity in all our interactions, to provide our clients with real value gained from our experiences in national and international markets.

Our vision at IBC is to maintain and develop our presence as a leading contractor company in the market, whose reputation is built on trust. We strive to provide our clients with high-quality and efficient service through innovative applications of engineering capability and technology.

In addition, we are committed to contributing to the vision of **2030** for the **Kingdom of Saudi Arabia** by supporting the development of sustainable and innovative buildings that align with the city's goals for a prosperous and modern future.

Mission

1

To provide a level of service that will exceed the expectations of our clients and deliver their projects within the best quality, time and cost.

2

Maintain the highest level of quality and allow our employees the opportunity to grow and prosper.

3

To instill confidence with all parties by professionally managing all aspects of the project whether it is large or small.



*The quality of a building is reflected
in the quality of its details.*

- Mies van der Rohe



Our Services

Architectural Metal:

Our expertise in architectural metal allows us to incorporate innovative designs and solutions in our building projects.

Fitouts:

We specialize in creating exceptional fitouts that enhance the functionality and aesthetics of interior spaces.

Value Engineering:

Our value engineering approach ensures that we provide cost-effective solutions without compromising on quality or performance.



Health and Safety Measures

At IBC, we take **health and safety** very seriously. We are committed to creating a safe working environment for our employees, subcontractors, clients, and the public.

We adhere to strict health and safety guidelines to ensure that our projects are completed **without incidents or injuries**. Our health and safety measures include regular training for our staff on safe work practices, use of appropriate personal protective equipment, and ongoing risk assessments to identify and address potential hazards.

We maintain a proactive approach to health and safety management and continuously monitor and review our policies and procedures to ensure compliance with **local regulations** and **industry standards**. Our ultimate goal is to achieve a zero-incident workplace and ensure the well-being of everyone involved in our projects.



Our Factory

IBC operates a state-of-the-art architectural and sheet metal factory located in Riyadh, Saudi Arabia. The facility is equipped with the latest technology and CNC machinery, enabling us to produce high-quality and customized metal products for our projects.

Our factory is staffed with a team of skilled professionals and certified welders who are dedicated to delivering excellence in every aspect of the manufacturing process. We adhere to strict quality control measures to ensure that our products meet the highest standards of quality and durability. Our factory is an integral part of our commitment to delivering innovative and efficient solutions to our clients.

CNC Fiber Laser



**Press Bending
Machine**



Shearing Machine



Iron Worker



Our Products

- Metal Furniture



- Decorative Sheet Metal



- Metal Gates and Doors



- Stainless Steel Cabinets



- Handrails and Balustrade



- Cladding and Rainscreen



- Light Steel Structure

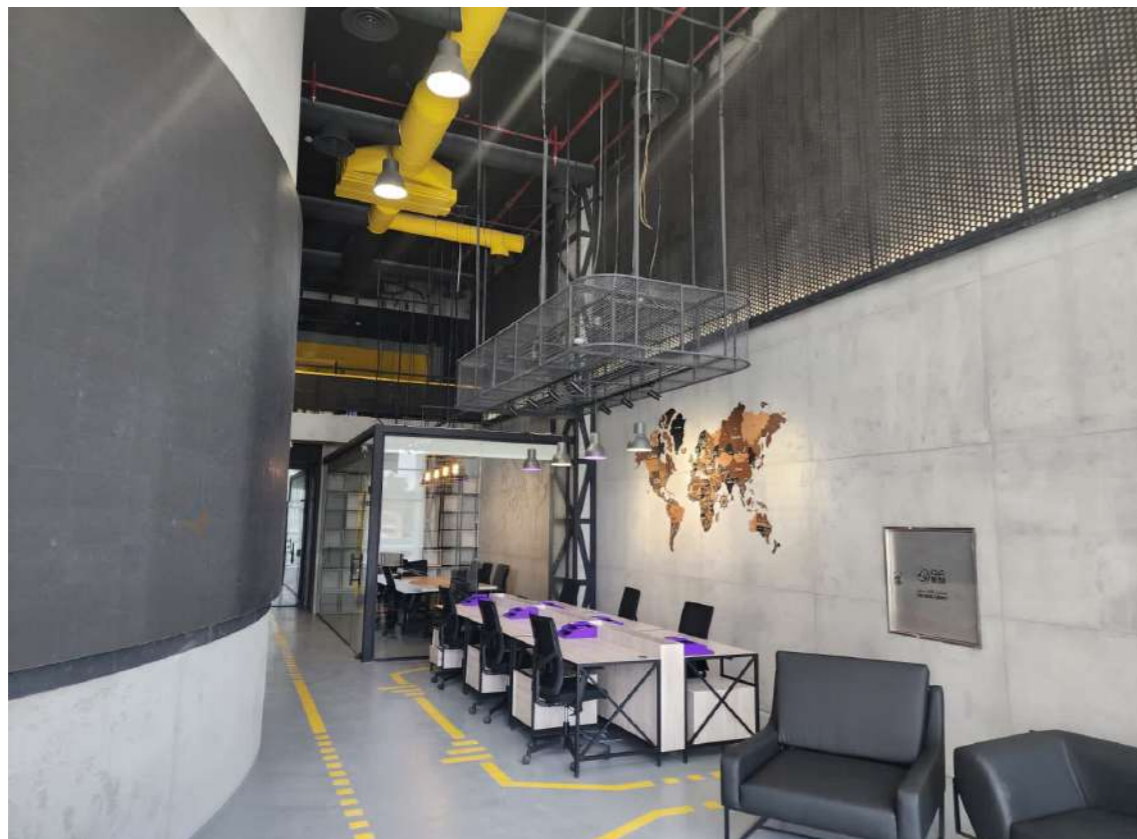
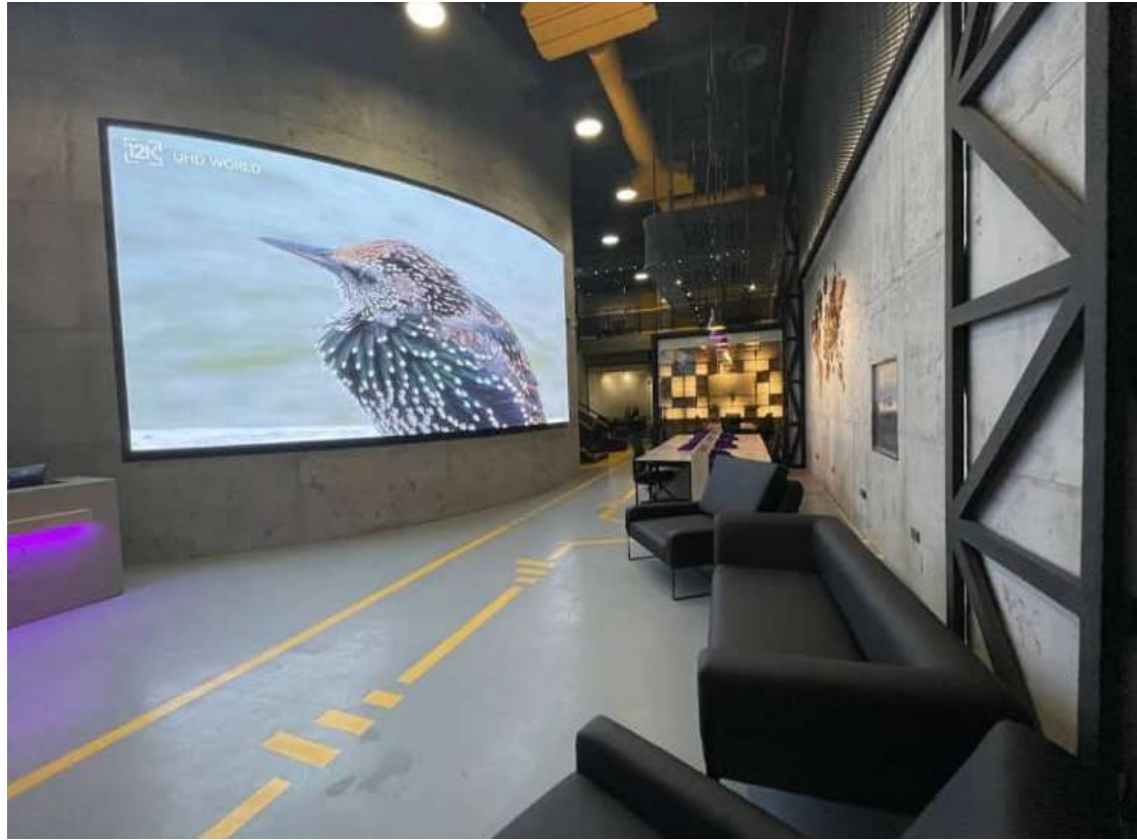


- Steel Pergulas and Steel Gazebos



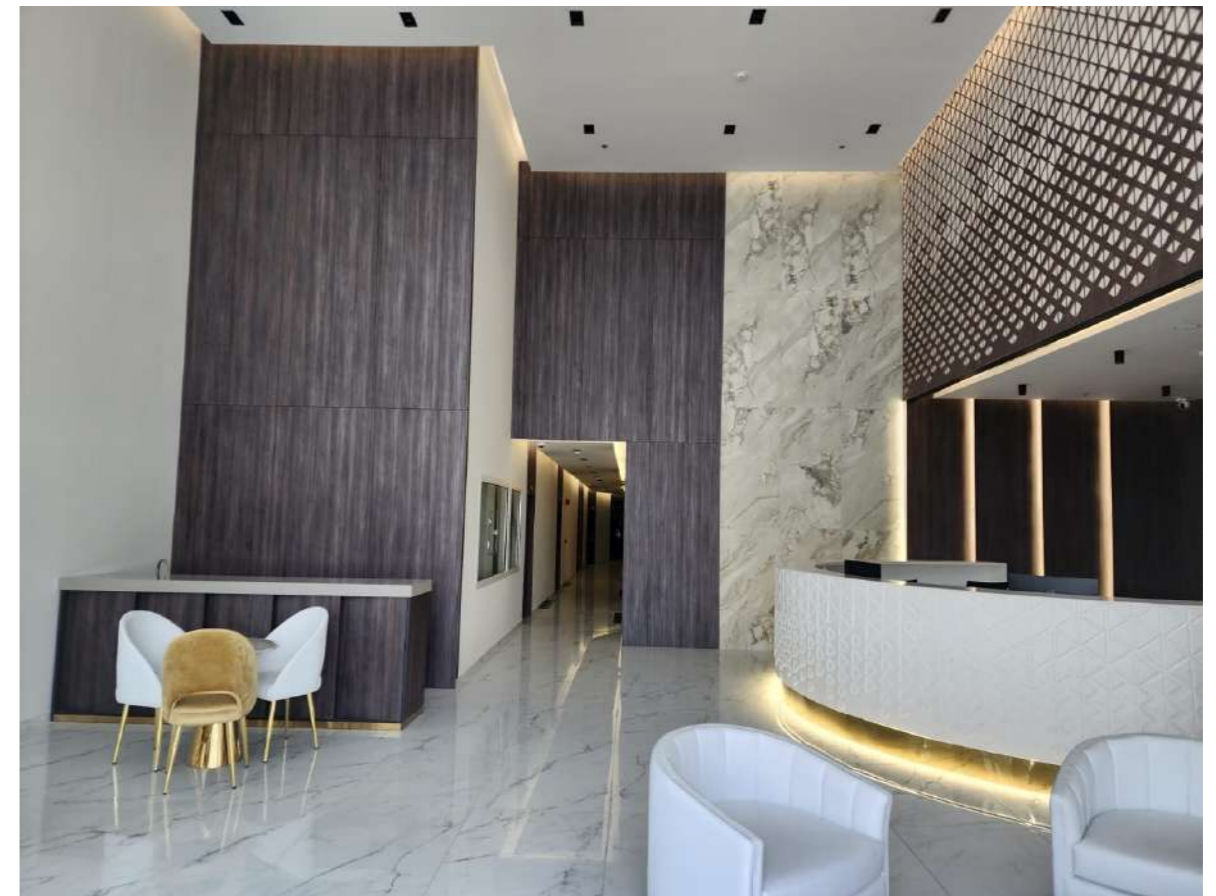
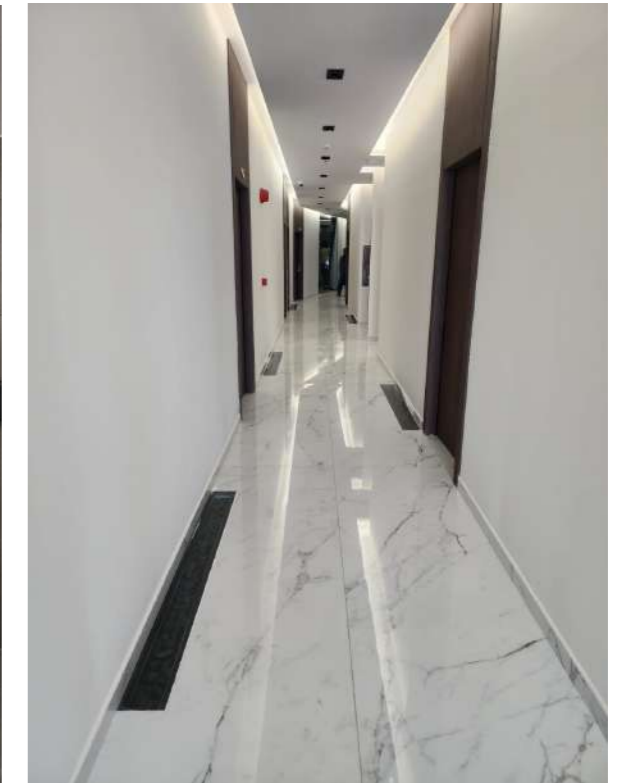
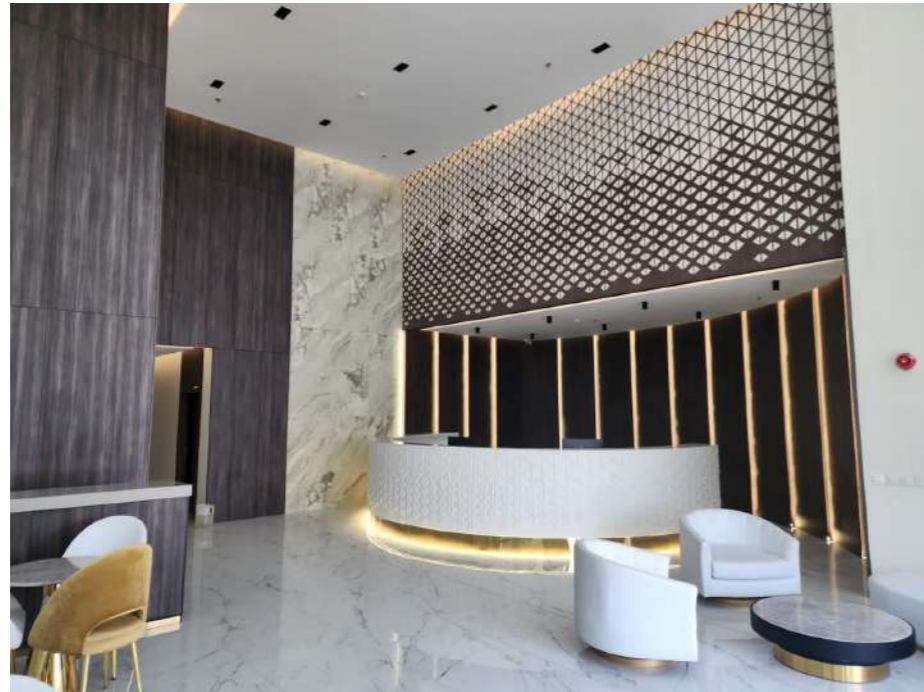
Key Projects

Plob Makers Showroom :
- 250 SQM Complete Fitout Project



Retruvia Clinics :

- 1200 SQM Complete Fitout Project



Misk City Hub

- Louvre Boundary Wall



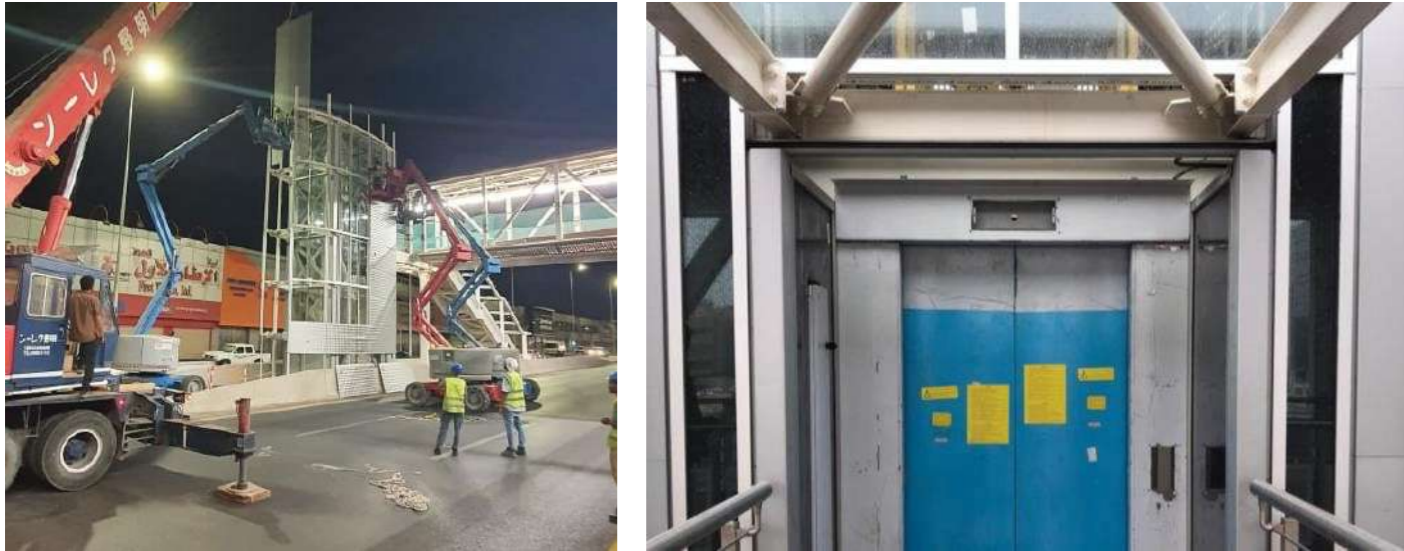
Bus Rapid Transit - Riyadh

- Main Contractor Saudi Constructioneer
- Scope of Work : Stainless Steel Cladding, Stainless Steel Handrails, Rainsteel Cladding



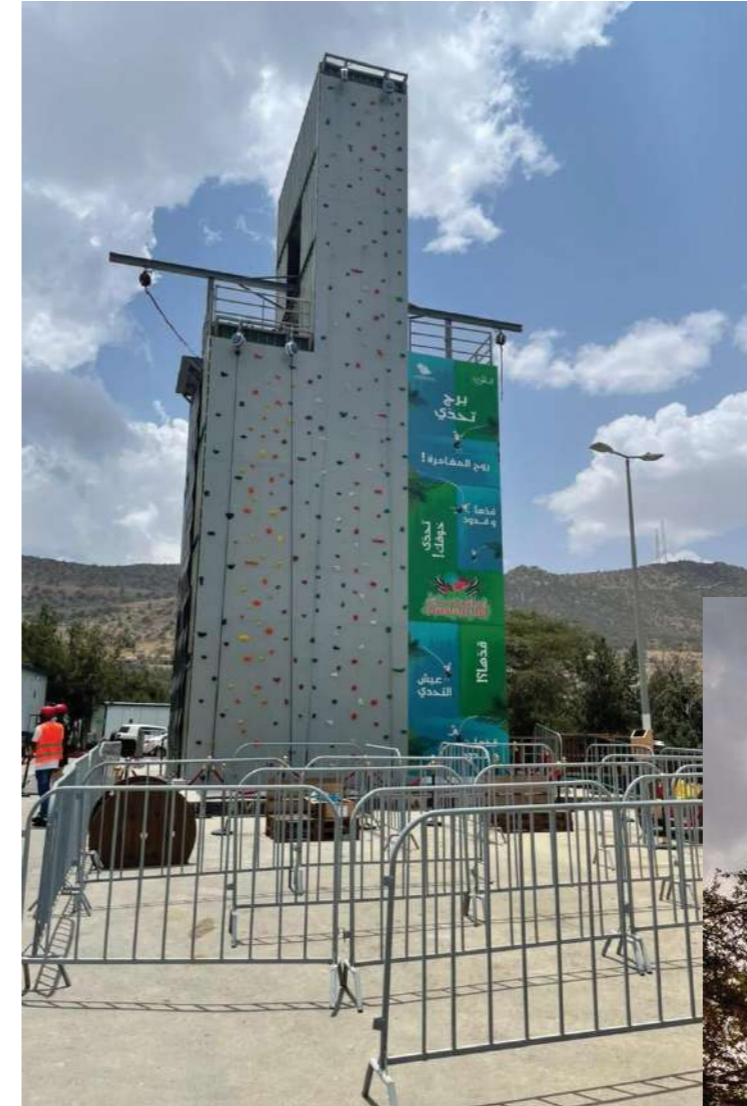
Bus Rapid Transit - Riyadh

- Main Contractor Saudi Constructioneer
- Scope of Work : Stainless Steel Cladding, Stainless Steel Handrails, Rainsteel Cladding



Al-Baha Seasons

- Quick jump containers and steel structure tower.



Em Sherif Cafe - Riyadh

- Ramadan 2023 Decoration



Our Clients

